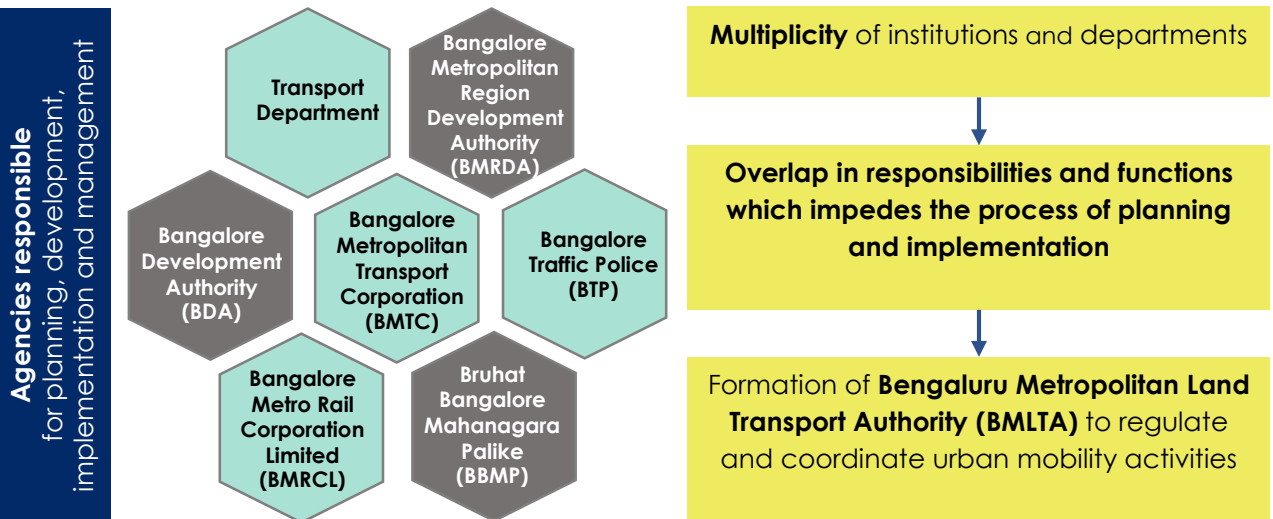


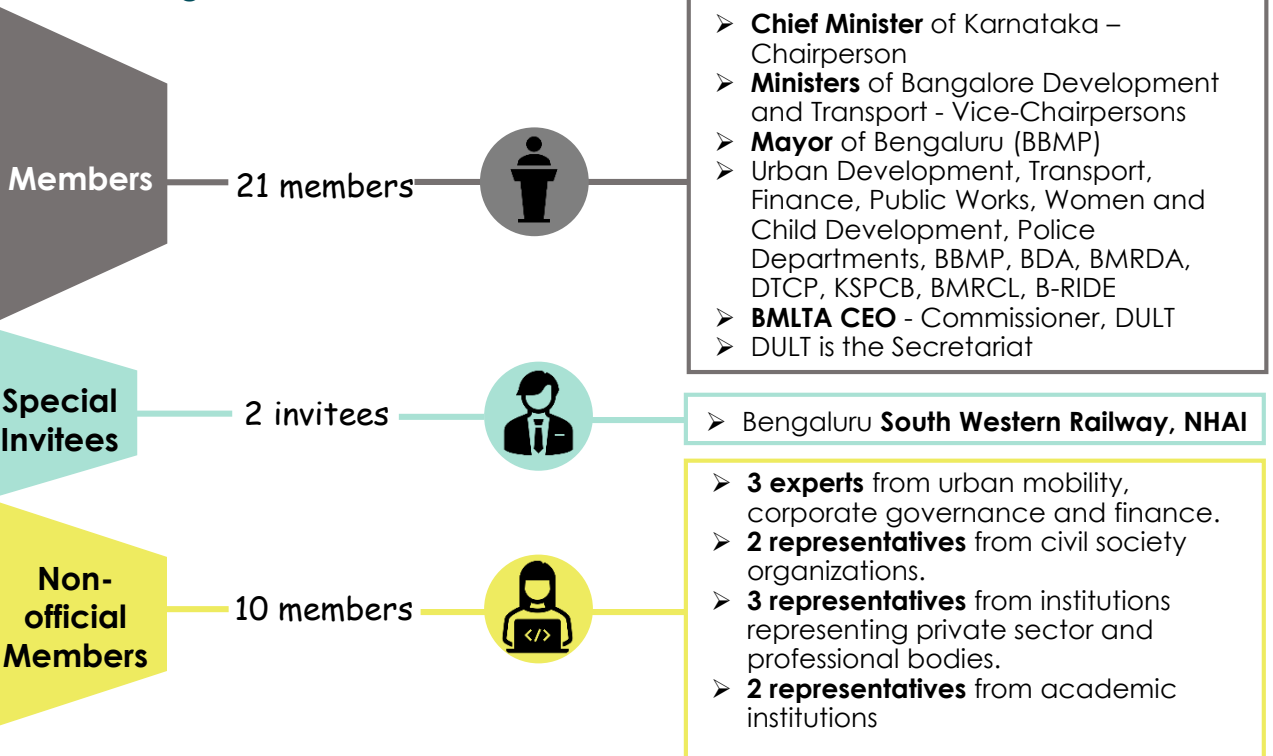
What is BMLTA?

The **National Urban Transport Policy 2014** recommends formation of a Unified Metropolitan Transport Authority (UMTA). Bengaluru Metropolitan Land Transport Authority (BMLTA) Committee was constituted in 2007. Through the BMLTA Act, Bengaluru aims to constitute the authority with statutory backup to regulate and coordinate urban mobility initiatives in the **Bengaluru Metropolitan Area (BMA)**.

Why BMLTA?



BMLTA Organization



BMLTA Executive Committee comprising of **12 official and 4 non-official** members to be constituted to assist in the discharge of BMLTA functions.

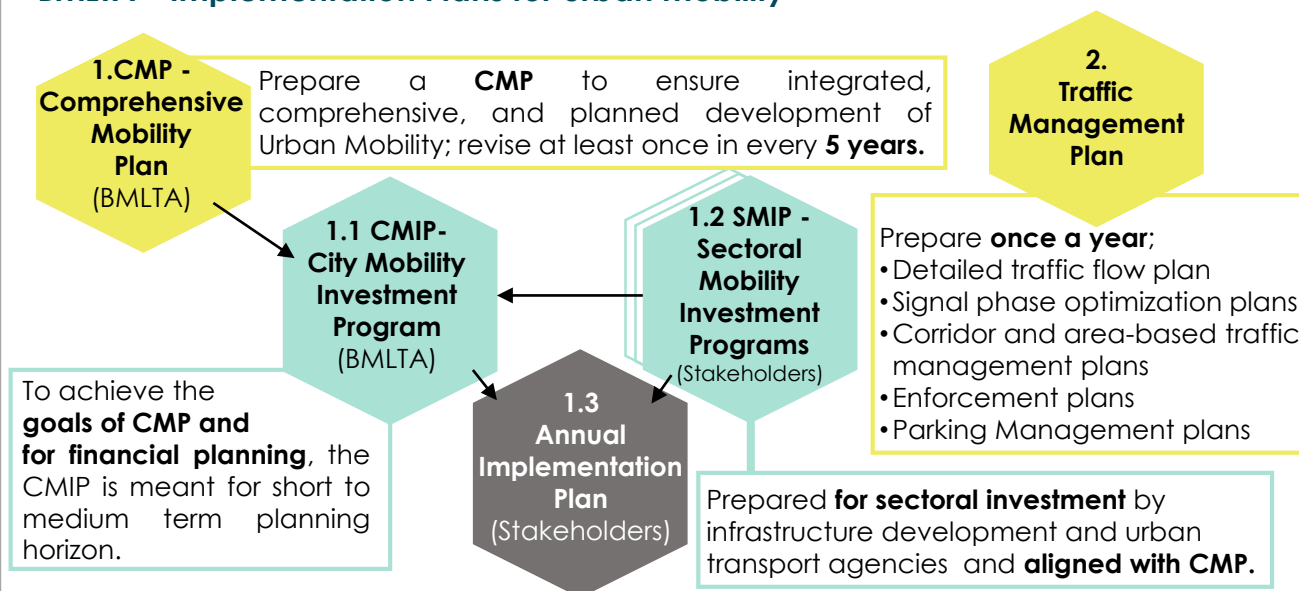
BMLTA - Roles and Functions

FRAMEWORK	FUNCTION	ROLE
Governance	BMLTA leads the transport planning agenda and creates constructive urban nexus with land use.	Setting vision and getting sign off across stakeholders for the common objective.
Policy and Planning	BMLTA prepares Comprehensive Mobility Plan (CMP), sets standards, provides uniform planning parameters, develops modelling tools, and helps implementing agencies provide quality outputs.	Coordinating with all government and private sector stakeholders, creating collaborative ecosystem to ensure design of Comprehensive Mobility Plan aligned projects.
Delivery, Monitoring and Oversight	BMLTA provides oversight to project delivery and monitors outcomes through defined service level benchmarks.	Helps implementing agency deliver in accordance to plan.
Learning	BMLTA evaluates outcomes , and sharpens the planning tools.	Continuous update of planning tools to help design effective interventions in urban transport.

BMLTA – Funding

- BMLTA Fund will be set up for the purposes of implementation of the Act
- A proportion of existing and future new revenue sources will be allocated to BMLTA as per prescribed Rules and Regulations
- The State Government shall constitute a seed fund along with the establishment of the Authority

BMLTA – Implementation Plans for urban mobility



Based on CMIP and SMIP, prepare the Annual Implementation Plan at the beginning of each year